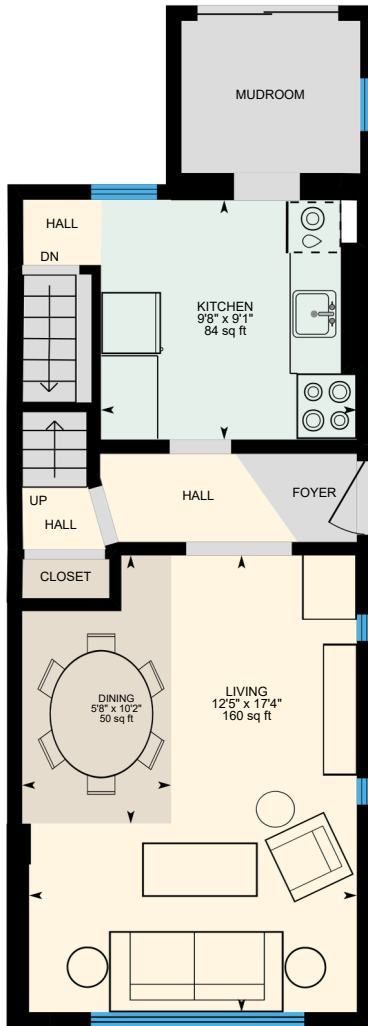
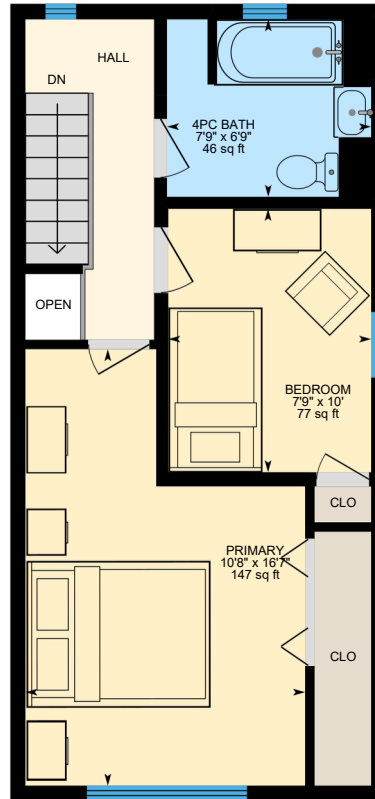


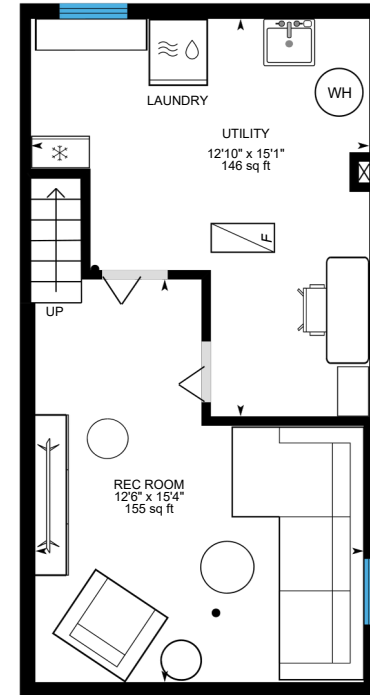
# 32 Costain Ave, Toronto, ON



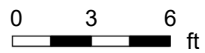
Main Floor



2nd Floor



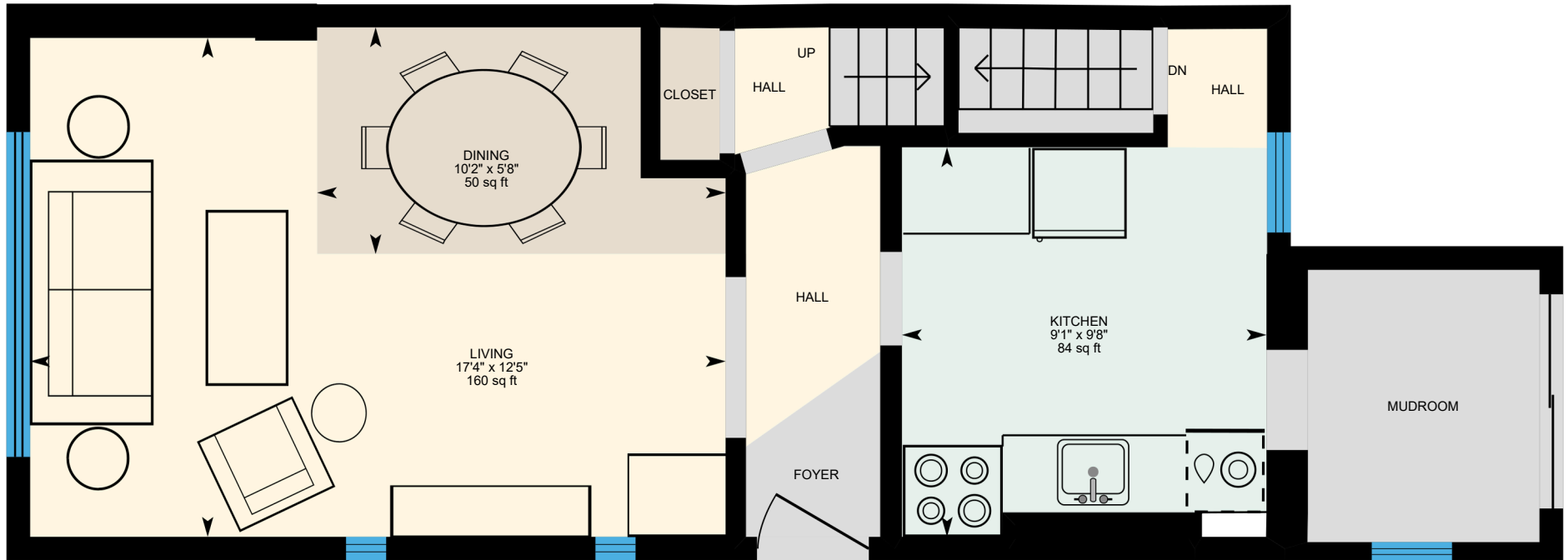
Basement (Below Grade)



PREPARED: 2026/03/31

# 32 Costain Ave, Toronto, ON

## MainFloor



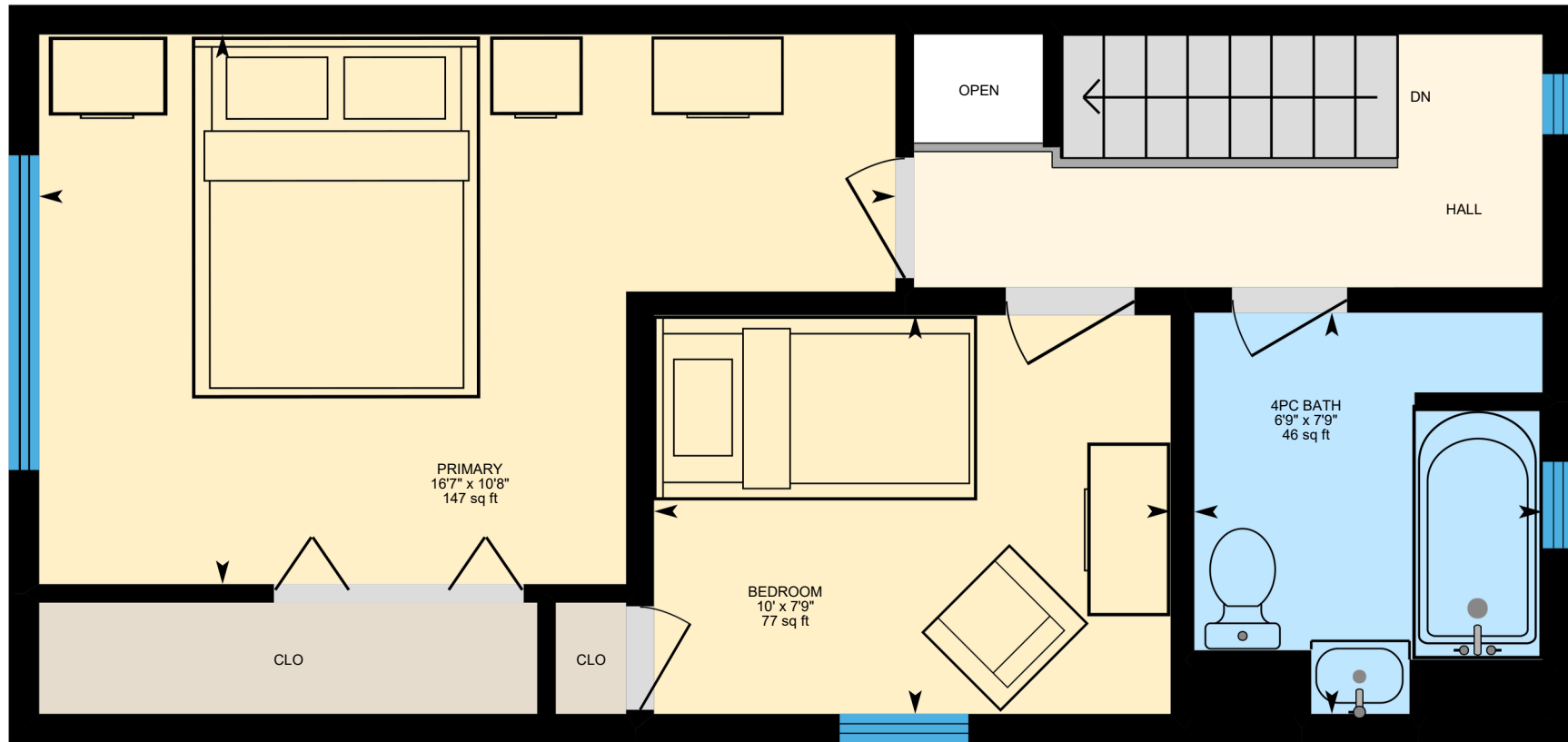
03 PREPARED:2026/03/31 6 ft



White regions are excluded from total floor area in iGUIDE floor plans. All room dimensions and floor areas must be considered approximate and are subject to independent verification.

# 32 Costain Ave, Toronto, ON

## 2nd Floor



03 PREPARED:2026/03/31

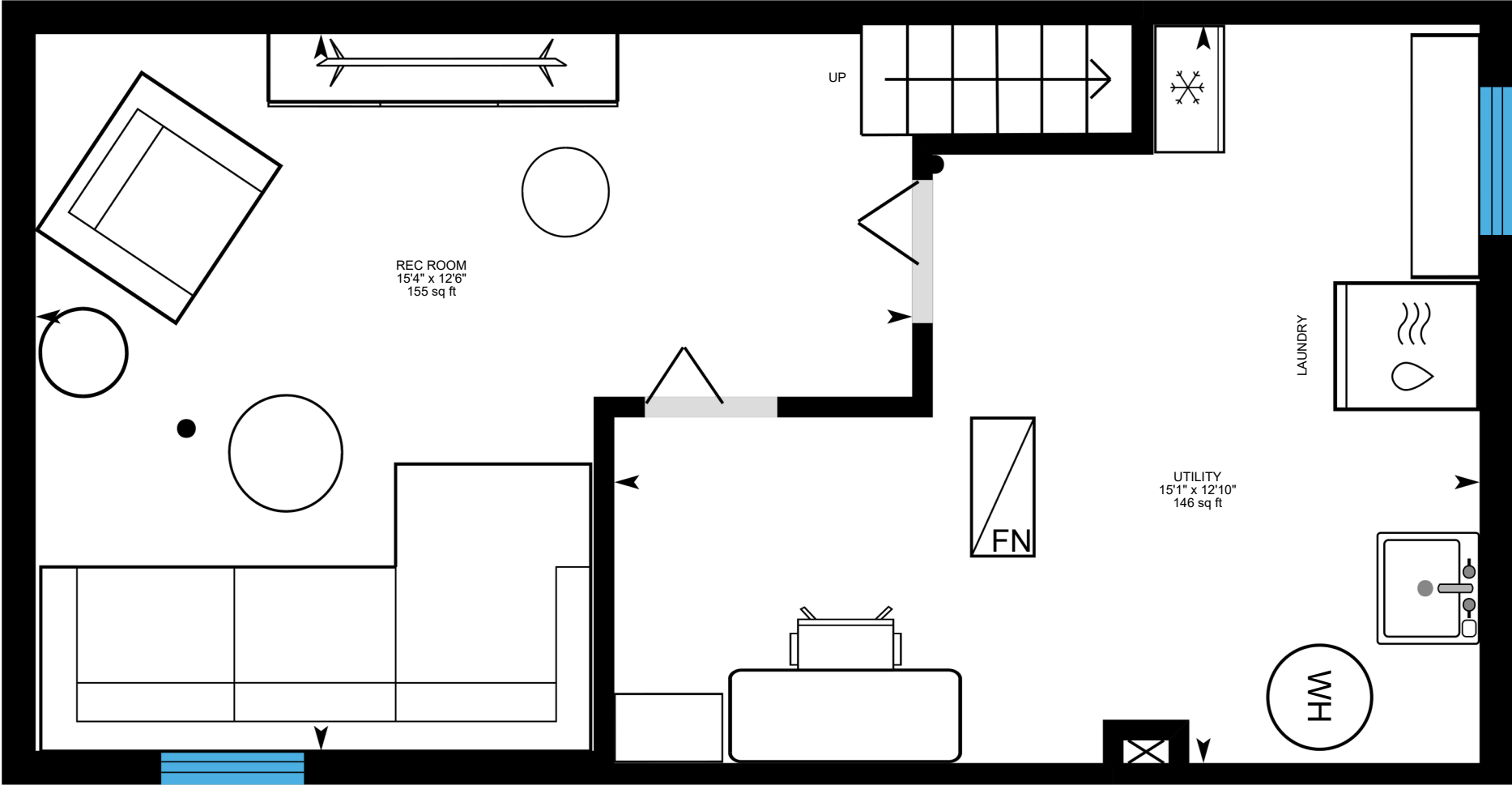
6 ft

White regions are excluded from total floor area in iGUIDE floor plans. All room dimensions and floor areas must be considered approximate and are subject to independent verification.



# 32 Costain Ave, Toronto, ON

## Basement (Below Grade)



02 PREPARED:2026/03/31 4 ft



White regions are excluded from total floor area in iGUIDE floor plans. All room dimensions and floor areas must be considered approximate and are subject to independent verification.